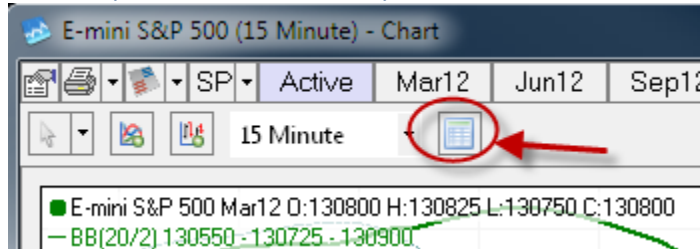


I have added a new feature to the chart... The ability to view and export data.

Here are the details of the data inspection view (for support to update docs or answer questions):

Click "Inspect Data" button to open new window:



The Data Inspection window looks like this:

Time	Trade Date	Open	High	Low	Close	Volume	LREG	STDERR
01/20/2012 12:00:00.000	01/20/2012	130800	130875	130750	130850	10426	<b>130700</b>	75
01/20/2012 11:45:00.000	01/20/2012	130775	130825	130750	130775	22176	<b>130675</b>	75
01/20/2012 11:30:00.000	01/20/2012	130700	130875	130700	130800	33558	<b>130650</b>	75
01/20/2012 11:15:00.000	01/20/2012	130675	130875	130675	130725	16049	<b>130650</b>	75
01/20/2012 11:00:00.000	01/20/2012	130650	130875	130600	130700	35599	<b>130650</b>	75
01/20/2012 10:45:00.000	01/20/2012	130525	130650	130500	130650	36611	<b>130675</b>	75
01/20/2012 10:30:00.000	01/20/2012	130625	130650	130475	130525	41396	<b>130700</b>	75
01/20/2012 10:15:00.000	01/20/2012	130575	130675	130575	130625	43544	<b>130725</b>	75
01/20/2012 10:00:00.000	01/20/2012	130600	130675	130600	130650	69280	<b>130750</b>	75
01/20/2012 09:45:00.000	01/20/2012	130600	130675	130600	130650	53013	<b>130775</b>	75
01/20/2012 09:30:00.000	01/20/2012	130600	130675	130600	130650	50292	<b>130775</b>	75
01/20/2012 09:15:00.000	01/20/2012	130750	130875	130625	130875	48104	<b>130775</b>	75
01/20/2012 09:00:00.000	01/20/2012	130850	130850	130550	130750	76752	<b>130775</b>	75
01/20/2012 08:45:00.000	01/20/2012	130850	130950	130700	130825	68716	<b>130775</b>	75
01/20/2012 08:30:00.000	01/20/2012	130825	130900	130650	130875	105137	<b>130775</b>	75
01/20/2012 08:15:00.000	01/20/2012	130725	130875	130625	130800	36285	<b>130775</b>	75
01/20/2012 08:00:00.000	01/20/2012	130725	130825	130725	130725	14590	<b>130775</b>	75
01/20/2012 07:45:00.000	01/20/2012	130650	130775	130625	130725	13190	<b>130800</b>	75

Everything about this window is "live". The data updates live, the list of studies updates live, etc.

Columns can be hidden/restored. The data as a whole can be exported using the toolbar button, the price format can be changed, etc. The data can be sorted, by clicking the column headers.

Column display and data sort are not preserved, when switching studies the grid reverts back to the defaults.

When exporting the data to file or clipboard (for pasting into Excel), what you see is what you get... e.g. if the data is sorted, columns re-arranged or hidden, price format changed, etc. that is how the data gets exported.

If rows are selected, just those rows or a single cell can be copied to the clipboard using a right-click context menu.